

How Robovision Bridges the Gap Between Inspection and Yield

Robovision's Industrial Vision Intelligence Infrastructure delivers a decision layer built on three core applications: AI-driven automatic defect classification (AI ADC), defect measurement, and spatial signature.

Industrial-Grade AI with Built-In Governance

These three applications form a unified system that combines industrial-grade defect classification with built-in governance over how every decision is made and continuously improved. Each application builds on the last, adding a new layer of intelligence across wafers to reveal patterns and context at scale.

Robovision's Industrial Vision AI for Wafer Inspection

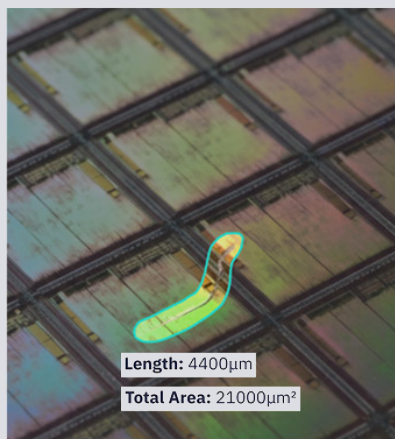
AI ADC Application

Automatically identifies and sorts defect types from images



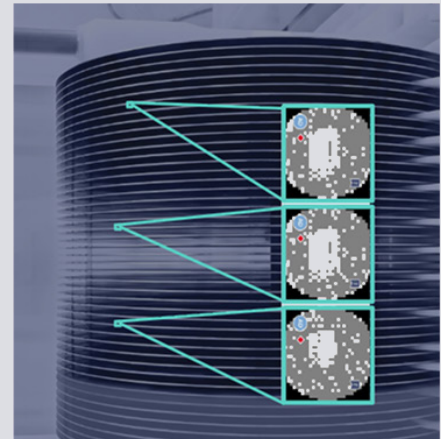
Defect Measurement Application

Pinpoints exact location and quantifies geometric properties through segmentation



Spatial Signature Application

Reveals recurring patterns across wafers and lots to pinpoint root causes



One Shared Workflow Across Applications

These applications operate within the same workflow and can be combined as needed.

One Shared Workflow Across Applications



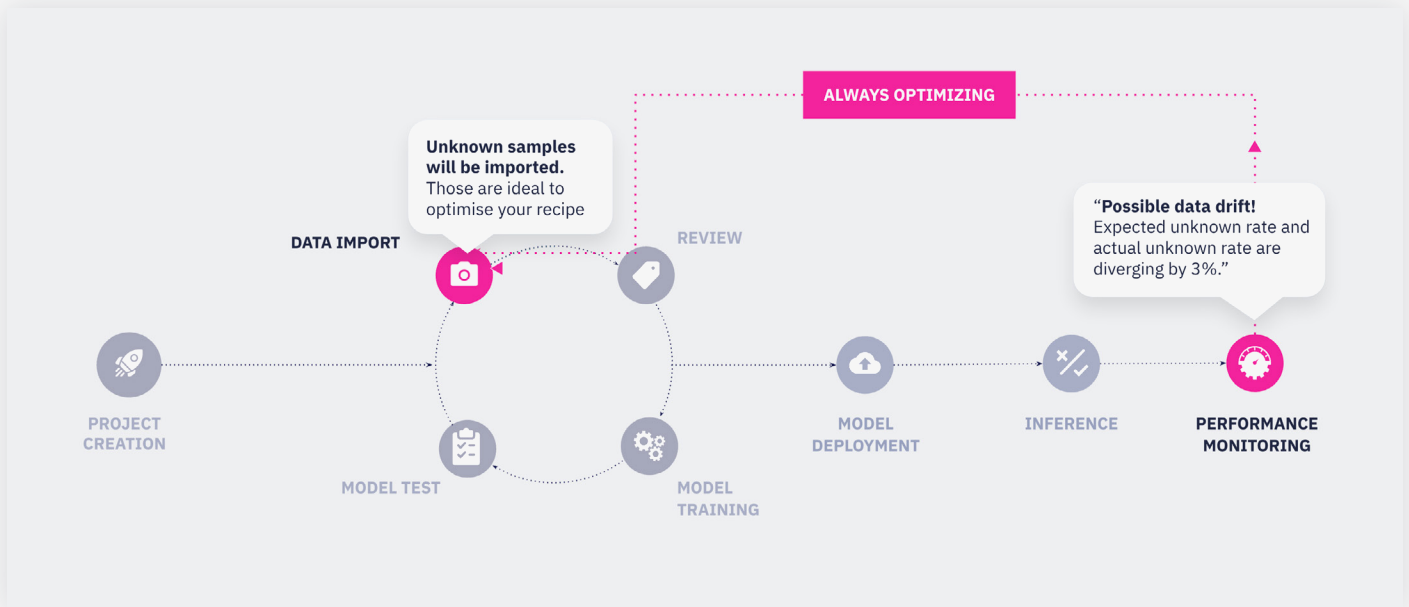
Each application builds on the last, adding a new layer of intelligence that reveals context and patterns at scale.

Supporting Fab-Wide Decision-Making

A unified review layer removes review decision fragmentation by providing role-specific interfaces on top of a shared decision foundation.

For Process Engineers

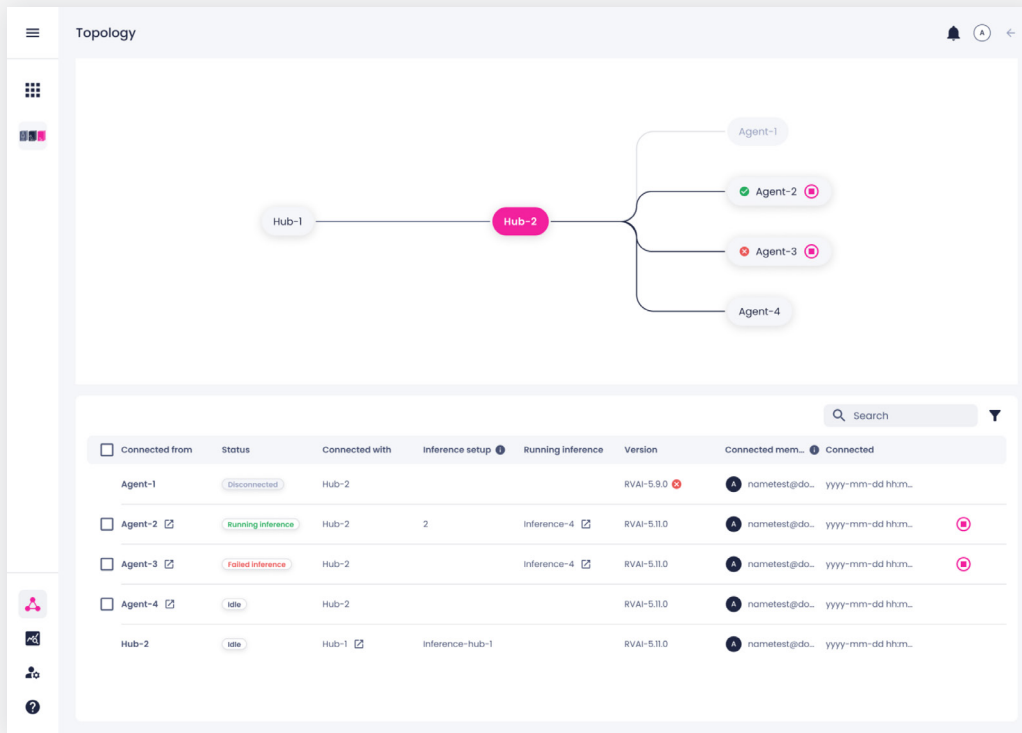
Assess and improve models with advanced interfaces support classification, defect measurement, and spatial analysis.



Assess and Improve Your Models

For Operators

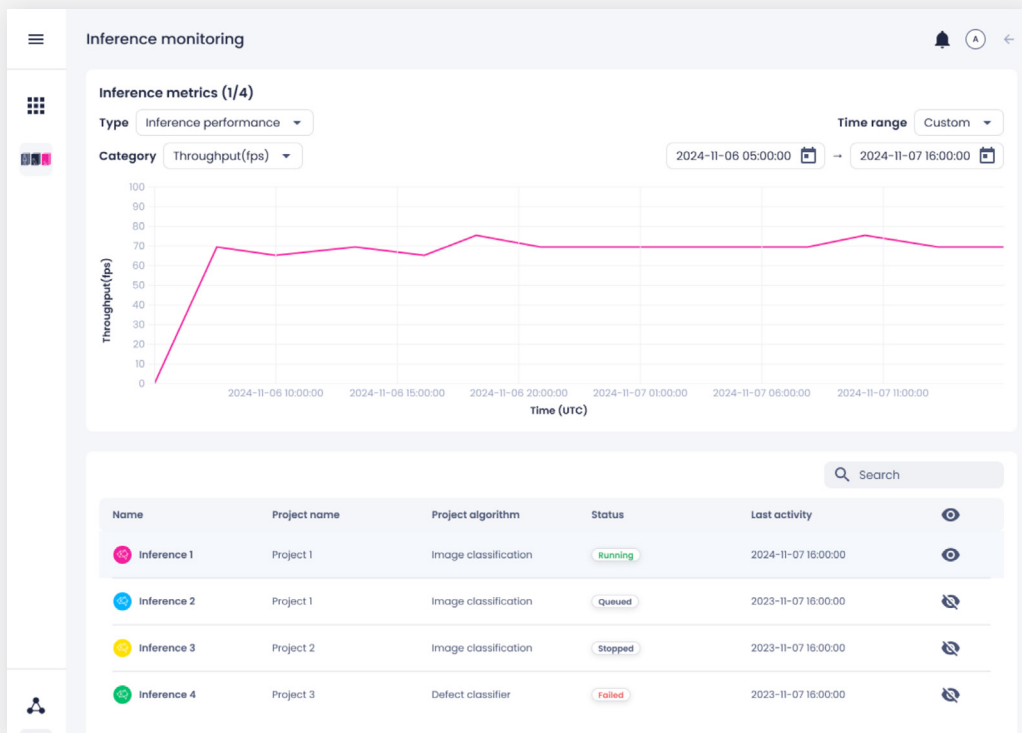
Manage the fleet and process inspection results without adding complexity to existing workflows.



Fleet Management

For Management

The monitoring center provides visibility into operational impact, performance, and decision patterns.



Monitoring Center



Built Around Your Existing Process

Robovision's AI operates as a secondary review layer. It does not disrupt existing inspection flows or change how decisions are controlled in production.

- Yield recovery driven by AOI detection combined with AI-assisted acceptance
- Performance measured against controlled false accept rate benchmark
- Decision quality improves, existing safeguards remain in place
- AI does not autonomously release product
- MES remains responsible for class-to-bin mapping

With Robovision, fabs get a decision layer between inspection and yield, moving them from reactive to controlled, measurable review.

OUTCOME

A scalable approach to decision-making that turns yield loss into a multimillion-euro financial and performance gain.



To learn more about how Robovision bridges the decision gap between inspection and yield, **head to our blog**.

[HEAD TO OUR BLOG](#)

Or **get in touch** to discuss your yield recovery opportunity and the operational impact of an AI-driven review layer.

[LET'S TALK](#)